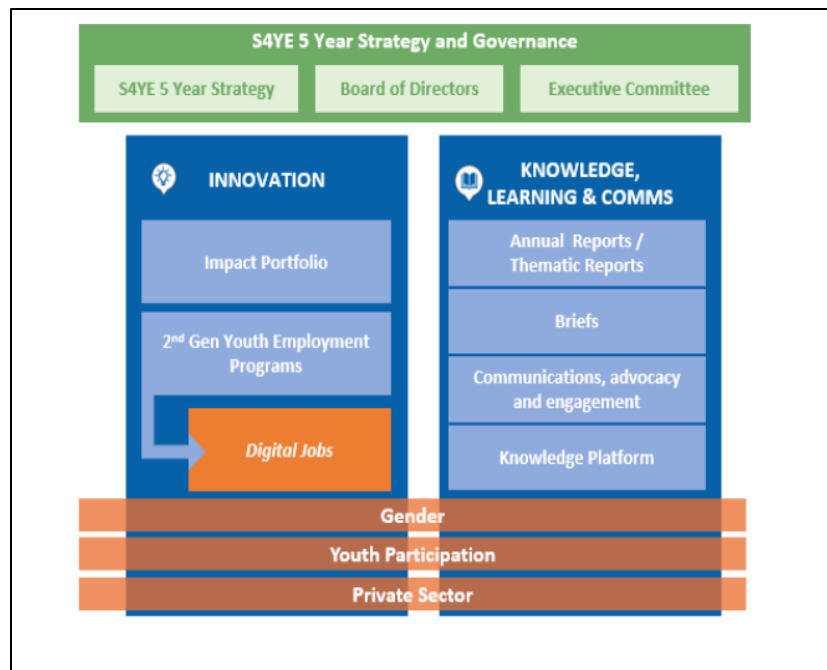


S4YE Impact Portfolio

ABOUT SOLUTIONS FOR YOUTH EMPLOYMENT (S4YE)

Solutions for Youth Employment (S4YE) is a multi-stakeholder coalition among public sector, private sector, and civil society actors that aims to provide leadership and resources for catalytic action to increase the number of young people engaged in productive work. The S4YE Secretariat is housed in the Social Protection and Jobs Global Practice of the World Bank. S4YE partners include the World Bank, Accenture, The Rockefeller Foundation, Mastercard Foundation, Microsoft, Plan International, International Youth Foundation (IYF), Youth Business International (YBI), RAND Corporation, the International Labour Organization (ILO), the Governments of Norway, Germany, the UN Envoy for Youth, and multiple private companies (over 20 large corporations). S4YE’s strategic objective is to scale up innovations in the design and implementation approaches of youth employment programs.



ABOUT THE S4YE IMPACT PORTFOLIO (IP)

One of the pillars of S4YE’s work to promote bottom-up understanding of *live and ongoing innovations* in the field is its community of practice, the “Impact Portfolio” (IP). Launched in January 2017, the IP is currently made up of 19 high-potential and innovative youth employment projects. The projects in this dynamic learning community are led by partner organizations, including Save the Children, McKinsey, UNICEF, Microsoft, Technoserve, Harambee, Digital Divide Data, Educate!, and others. As a first step, S4YE curated micro-innovations from the 19 projects to publish the [S4YE Impact Portfolio Report](#), and then continued to successfully facilitate knowledge sharing within the IP community through learning events and other collaborations. The existing projects in the community of practice are listed in the Annex.

OBJECTIVE OF IP EXPANSION

In its first phase, the Impact Portfolio developed into a robust, lively peer-to-peer learning community where project teams from diverse partner organizations come together and discuss and share knowledge on practical design issues. Regular webinars and technical discussions have supported projects in learning innovative design ideas from each other. The S4YE Secretariat also regularly shares tools and experts from the World Bank with the partner community. IP Members team up on writing short knowledge briefs to share with the broader youth employment community. Building on the success of this first phase, and keeping up with the need for agile innovations in the rapidly changing world of work, the IP community would like to expand its network. The objective of this expansion is to identify and reach out to youth employment projects that are developing cutting edge innovations to join this learning community.

WHAT PROJECTS CAN EXPECT BY BECOMING IP MEMBERS

Some of the benefits that IP projects receive are

- Engagement with World Bank and other S4YE partner projects through learning events and opportunities for collaboration.
- Learning from other innovative youth employment projects through our shared learning activities.
- Getting visibility through S4YE's broader network and our ongoing communications work.
- Access to experts on various topics related to youth employment.
- Opportunities to collaborate with other projects and [the S4YE Secretariat](#) on knowledge briefs and blogs for the World Bank's Jobs and Development blog, and present their project findings to others in the community and to S4YE's broader network.
- Developing a shared learning agenda on specific topics, such as 'future of work', reaching disadvantaged youth, and building evidence on innovations that work
- Building relationships with other innovative thinkers in the global youth employment ecosystem.
- Subscription to the IP newsletter, which includes the latest developments, publications, and activities from IP projects, S4YE, and the World Bank.

WHAT WE ARE LOOKING FOR

The Impact Portfolio is a group of innovative and promising projects and thus S4YE is searching for projects that are currently testing and trying out innovations in a youth employment program. We are specifically interested in innovations in the following (but not exclusively) fields:

- Use technology and/or disruptive technology in solving the youth employment problem,
- Innovative uses of data/analytics,
- Programs that connect youth to 'digital jobs',
- Projects working in rural areas and/or in agriculture in innovative ways (e.g. through a value chain approach that connects smallholder farmers),
- Projects that are especially targeting very poor and excluded youth, often in marginalized areas,
- Projects working at scale or operating at the 'system level'.

Please contact Jose Manuel Romero (jromero1@worldbank.org) with any questions regarding the Impact Portfolio or its expansion process.



Annex A

CURRENT MEMBERS OF THE S4YE IMPACT PORTFOLIO (FIRST COHORT)

PROJECT NAME	COUNTRY	ORGANIZATION(S)
Education for Youth Empowerment (EYE) Bangladesh	Bangladesh	Save the Children
Digital Divide Data (DDD)	Cambodia	Digital Divide Data (DDD)
Youth Building the Future (YBF)	Colombia	Accenture & Plan International
USAID Higher Education for Economic Growth ("the USAID project")	El Salvador	RTI International
Generation India	India	Generation: You Employed, Inc.
Kuza Project (Mombasa County Youth Employment Programme)	Kenya	UK Department of International Development (DFID) & Adam Smith International
Kenya Youth Employment and Opportunities (KYEOP)	Kenya	World Bank
UPSHIFT Project	Kosovo	UNICEF
National Volunteer Service Program (NVSP)	Lebanon	World Bank
New Employment Opportunities (NEO) Panama	Panama	IYF & Multilateral Investment Fund (MIF)
Educate! Rwanda	Rwanda	Educate!
Strengthening Rural Youth Development through Enterprise (STRYDE)	Rwanda	Technoserve & MasterCard Foundation
Skills to Succeed Academy (S2S)	South Africa	Accenture
Harambee Youth Employment Accelerator	South Africa	Harambee Youth Employment Accelerator
Via: Pathways to Work	Tanzania	IYF & MasterCard Foundation
FORSATI Program	Tunisia	ILO
Tounes Ta3mal	Tunisia	Silatech & Microsoft
Livelihood Program Targeting Entrepreneurship Skills and Business Creation (LP-ESBC)	Turkey	Habitat (Turkey) & YBI
U-LEARN 2	Uganda	Swisscontact & MasterCard Foundation